

Authentication Guide

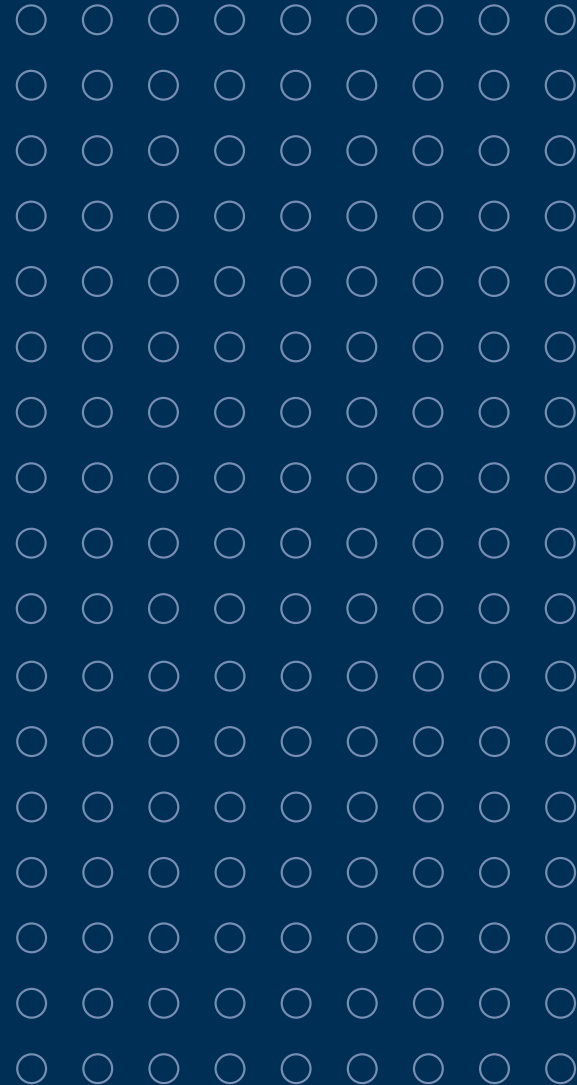
When partnering with EBSCO, you work with information technology teams that have strong ties to customers and a deep focus on service, support and security.



This guide is for people who manage user access to digital resources and want to learn more about options for authentication to EBSCO resources and services. EBSCO provides tools to support successful access, easy administration, and secure, private practices.

Table of Contents

- ✓ [Why Authentication Matters](#)
- ✓ [What is Single Sign-On?](#)
- ✓ [OpenAthens](#)
- ✓ [EBSCO Single Sign-On](#)
- ✓ [Sign In with Google](#)
- ✓ [Other Supported Authentication Methods](#)
- ✓ [Find My Organization](#)
- ✓ [Security and Privacy](#)



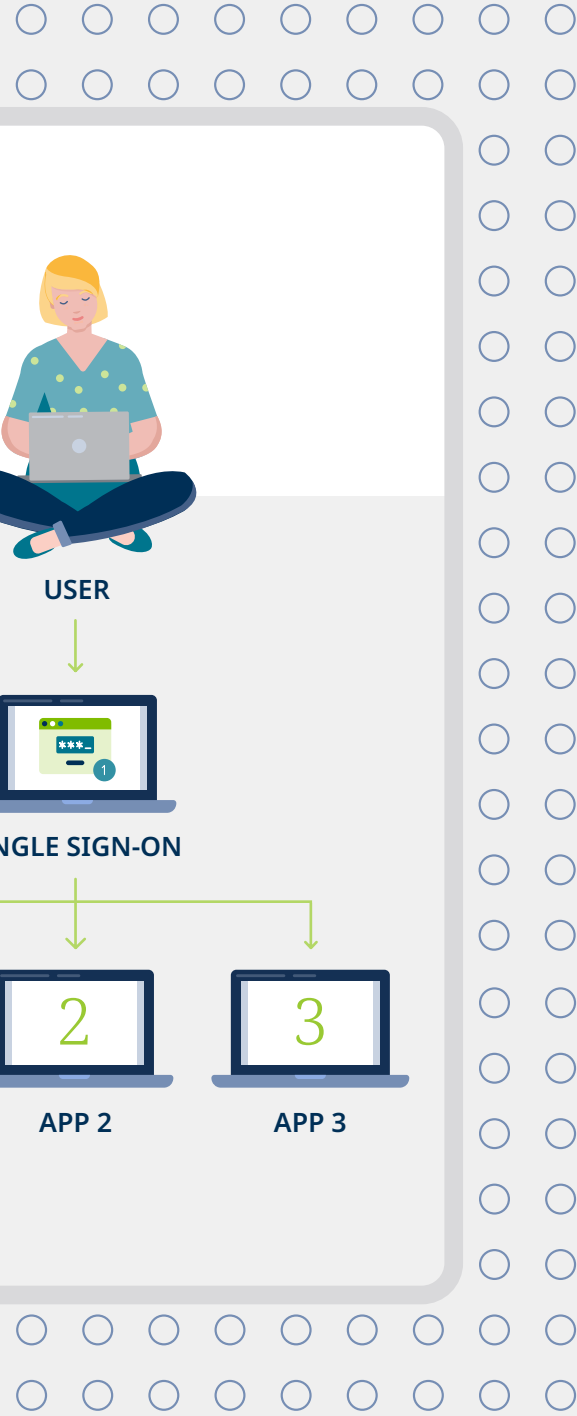
Why **Authentication Matters**

Your institution's authentication is of critical importance to ensuring successful access. This is especially true as many users continue to access digital resources and services remotely. Beyond successful access, your institution's authentication method can also influence the following:

1. Seamless access experience, including logins with a known, familiar account
2. Ease of administration
3. Security of access, and keeping data exchange minimal and private
4. Enhanced, personalized user experiences

Team up with EBSCO to find a solution that fits your specific needs.





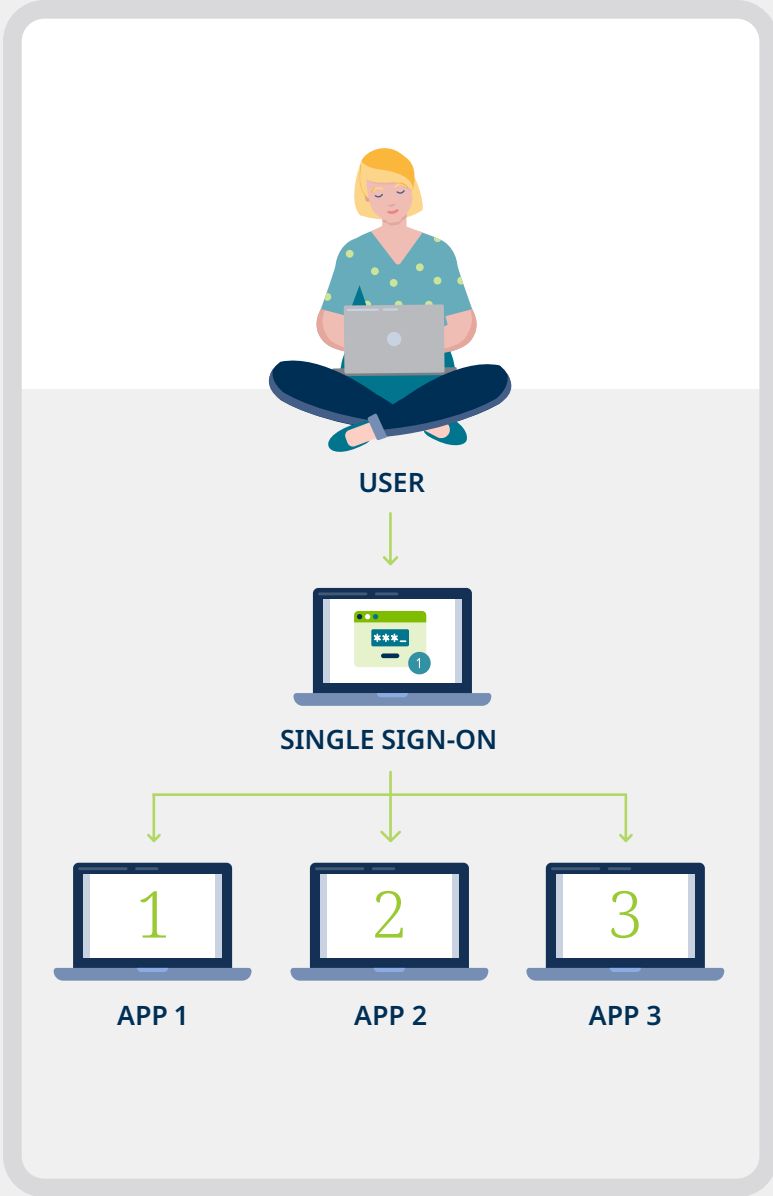
What is Single Sign-On?

Single Sign-On (SSO) is an authentication method where a user logs in once and is granted access to multiple, independent applications without having to log in again when accessing each subsequent application.

SSO is often managed by an organization's IT staff, and users begin an SSO session by logging in with their institutional credentials.

[View SSO Overview](#)

[Watch an SSO Video](#)





Makes accessing knowledge through SSO simple



OpenAthens is a fully hosted and supported Identity and Access Management service, enabling access with a single set of credentials for each end user. It is designed for use by libraries and information organizations, allowing for granular permissions and user experience controls. OpenAthens also delivers comprehensive usage reporting to help administrators provide better insights into how information is accessed.



OpenAthens supports single sign-on access to all resources.

This authentication tool includes both a global OpenAthens federation (SAML) and a hosted proxy service (IP). Organizations can choose to use their existing identity, such as Active Directory, Shibboleth, Okta and Google Workspace, and also manage accounts within the OpenAthens service. OpenAthens supports various protocols when integrating your identity solution, including SAML, LDAP, API, CAS, and SIRSI connections.

[Learn More
About OpenAthens](#)

[View OpenAthens
Success Stories](#)

EBSCO Single Sign-On

EBSCO SSO improves the user experience by allowing users to seamlessly access EBSCO products and services using their existing institutional credentials, giving them personalized access to EBSCO resources, and the ability to build projects, save content and download e-books.

EBSCO SSO supports any SAML-compliant identity solution, including but not limited to:

- Shibboleth
- PingFederate
- Okta
- Microsoft Azure/ADFS
- Google Workspace



[Learn More](#)



Sign In with **Google**

Google Sign In is an authentication method used frequently to log in to websites. This option is available to EBSCO users and supports an experience similar to SSO. The Google Sign In process is designed to simplify sign in and registration experiences, providing a convenient alternative to My EBSCOhost Personal User Account creation.



[Learn More](#)

Can't afford single sign-on? Explore your options, with the [Authentication Decision Tree Infographic](#).



EBSCO Compatible Methods

EBSCO currently supports the following authentication methods. If needed, please contact your EBSCO Account Representative to speak with an authentication specialist about how best to support seamless remote access to research materials and valuable experiences.

- Single Sign-On, including OpenAthens
- Personal User Account (My EBSCOhost)
- Google CASA / Universal CASA
- IP Address, including Proxy IP access
- Referring URL Authentication
- Guest Access
- User ID / Password
- Patron ID
- Patterned ID (or CPID, library card barcode access)
- Cookies
- **EBSCO products also currently support Learning Tools Interoperability (LTI) with Canvas, Moodle and Blackboard LMS**

Request assistance to integrate these methods with EBSCO products.

[Learn More About the Above Methods](#)

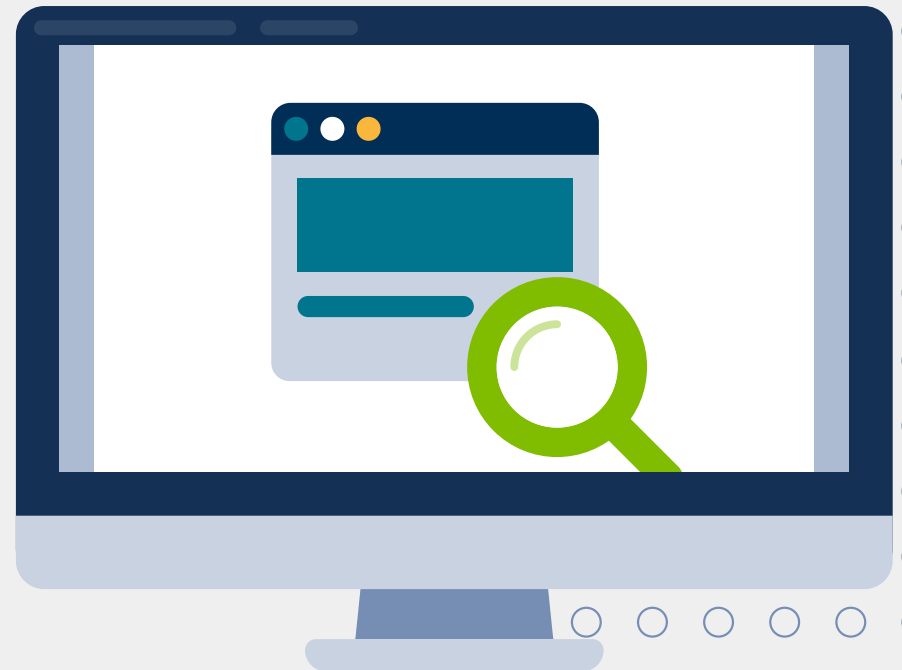
[Contact Support](#)

Find My Organization

A modern, user-friendly tool that supports users logging in with your library's preferred authentication method. Find My Organization (FMO) allows end users to search for the name of their organization or to use geolocation to see organizations in their nearby geographic vicinity.

Find My Organization is currently used to support logins to the EBSCO Mobile App, and will be used in the future to support authentication in the wider platform. FMO can be easily configured by the library to ensure users are prompted with your institution's preferred authentication method.

**Learn how to set up
your institution's
preferences in FMO**



Security and **Privacy**

EBSCO devotes time and resources to implement and support modern standards-based approaches in data security and compliance.

For more information on authentication, contact your EBSCO representative or request to have a rep contact you.

[Learn More](#)

[Contact Form](#)

